



PROJECT SUCCESS CITY OF ELYRIA

ICE RINK CHILLER



FOCESS

ENGINEERING PROCESS

FACTS:

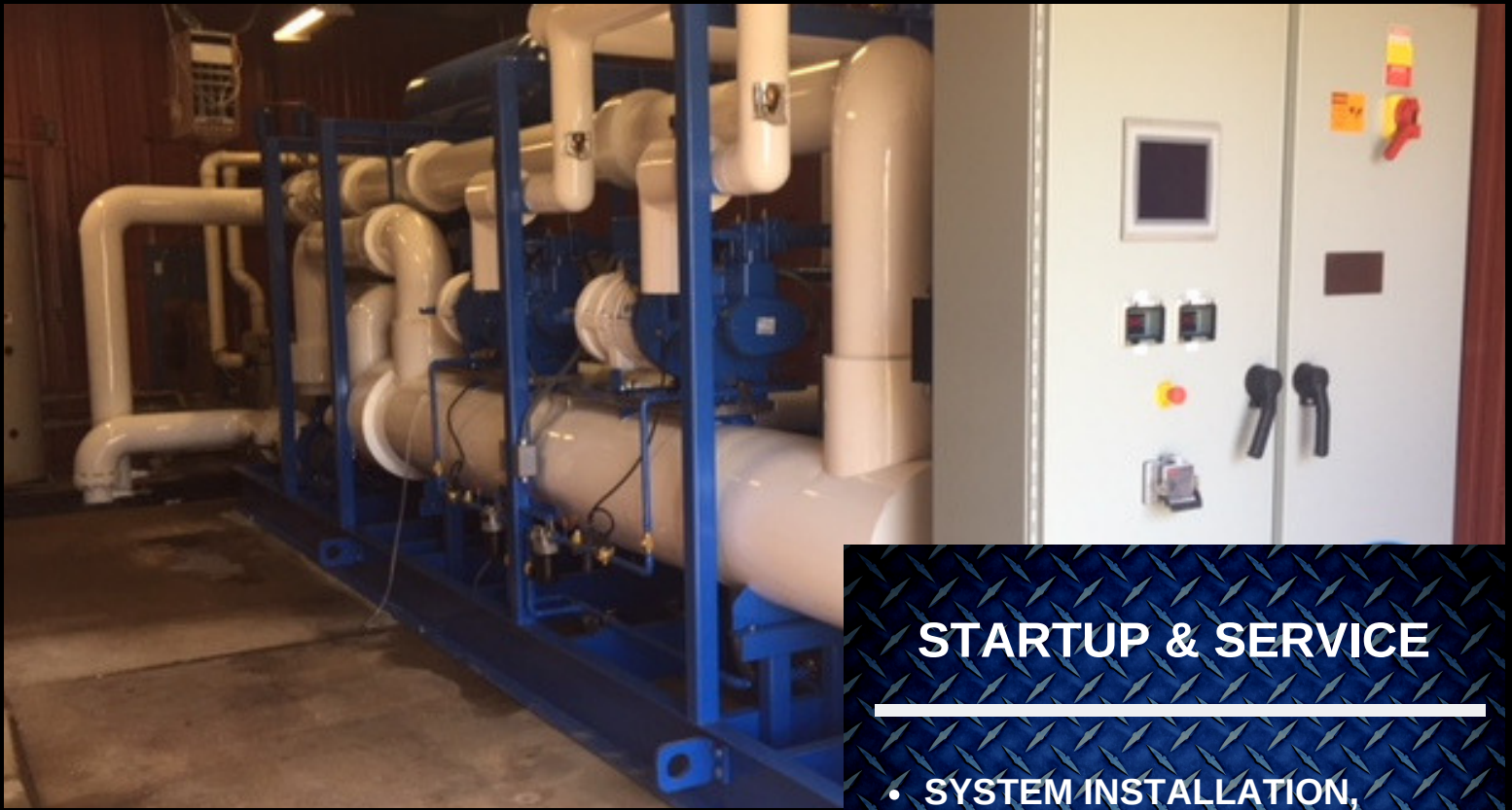
- INDOOR/OUTDOOR SEASONAL ICE RINK
- 1-SHEET ICE RINK
- R-22 REPLACEMENT WITH R-507
- GLYCOL PUMP SYSTEM REPLACEMENT

OBJECTIVES:

- REPLACEMENT OF EXISTING R-22 ICE RINK CHILLER WITH R-507 SYSTEM
- MINIMIZE MECHANICAL & ELECTRICAL CONTRACT WORK FOR DEMOLITION AND INSTALLATION OF NEW REFRIGERATION EQUIPMENT
- DEMOLITION & REMOVAL OF OLD REFRIGERATION SYSTEM
- ENERGY EFFICIENCY IMPROVEMENTS
- MEET CITY FINANCIAL BUDGET

CHALLENGES:

- MECHANICAL ROOM MODIFICATIONS
- AIR-COOLED CONDENSER LOCATION MODIFICATIONS
- FLOOR HEADER RE-WORK



STARTUP & SERVICE

- **SYSTEM INSTALLATION, STARTUP, & TRAINING**
- **SITE ACCEPTANCE TESTING**
- **ONGOING SERVICE AND PREVENTATIVE MAINTENANCE**

ENGINEERED SOLUTION



**INDUSTRIAL
CHILLER
EQUIPMENT**

COOLING CAPACITY: 100 TONS

COOLING TEMPERATURE: 15°F

PROCESS FLUID: 50% ETHYLENE GLYCOL

COMPRESSOR: SEMI-HERMETIC TWIN SCREW (2)

EVAPORATOR: DIRECT EXPANSION EXCHANGER

CONTROLS: ALLEN BRADLEY COMPACT LOGIX PLC WITH REMOTE MONITORING AND TROUBLESHOOTING

REFRIGERANT: R-507

CONDENSER: AIR-COOLED

ADDITIONAL PROJECT FEATURES:

DEMOLITION AND REMOVAL OF OLD REFRIGERATION SYSTEM

INSTALLATION OF NEW REFRIGERATION SYSTEM

PLUMBING & ELECTRICAL WORK

STRUCTURAL STAND FOR AIR-COOLED CONDENSER

**12750 BEREA RD.
CLEVELAND, OH**



**WWW.TEMPEST-ENG.COM
216-883-6500**